

January 2013

IN THE SPOTLIGHT

14 to 20 January Imm Köln, Cologne (D)

Big success for Living Divani as it returns to Imm Köln for the second year running. Cologne's International Furnishing Fair is a major showcase for the German and international markets. Returning with its usual, unmistakable style: elegance and discretion for a sense of timeless luxury. A presentation of iconic pieces and the latest arrivals, including Rod, NeoWall and Extrasoft sofas, Off Cut bookcase, Confident, Reader and Chauffeuse armchairs and coffee tables B2, Rabbit & the Tortoise Collection and Stack Table.

The space is decorated with a cosmopolitan look designed by Piero Lissoni, and softened with a selection of carpets from the Living Divani rug collection, adding the finishing touches to the scene and offering an image that is essential but never cold, minimal but with careful attention to even the finest detail, which would look the part as much at home as in the most refined of contract settings.



[Watch the video!](#)

26 to 27 January Berner Design Weekend, Bern (CH)

Now in its 11th edition, the Berner Design Weekend opens its doors to Living Divani, which will be a star feature in the Intraform showroom. Intraform, which has been a partner of Living Divani for some years, presents to the public a selection of the firm's most iconic products: Rod, NeoWall and Extrasoft sofas, Off Cut and Bukva bookcases, Family Chair, Ile Club bench, Hinge pouf, Softwall bed, and a range of accessories, including B2 coffee table.

Intraform and Living Divani will be part of the circuit of the six best furniture showrooms in the Swiss capital, giving a personal interpretation of the design universe.

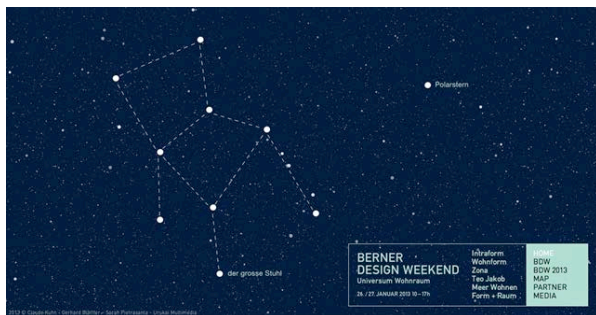
www.bdw.ch

Intraform

Rathausgasse, 76 – Bern (CH)

www.intraform.ch

Opening times: 10 am to 5 pm



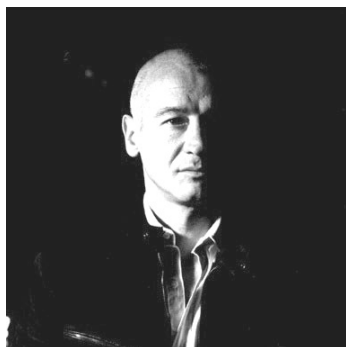
Living Divani s.r.l.

Strada del Cavolto 15/17 I-22040 Anzano del Parco (CO) Tel. +39 031630954 r.a. Fax +39 031632590
www.livingdivani.it info@livingdivani.it

Francesco Rota nominated for Wallpaper* "Design Awards 2013"

This veritable veteran of Italian design, who has worked with the big names in furniture, was recently launched to the topmost rung of the design ladder by magazine Wallpaper*, which included him among their nominees for "Designer of the year 2013", citing his classic simplicity, an exercise in restraint and sophistication.

For Living Divani, in 2012 he created the elegant family of Hinge stools, the perfect extension and companion to the family of Hinge coffee tables presented in 2010, and to Wing chair, designed in 2011.



Hinge



Hinge Stool



Wing

New Contract catalogue

A new work tool, dedicated in particular to interior designers and contractors, is available to give a technical slant, presenting and illustrating the Living Divani products for the contract sector. Structured as a series of technical sheets, the products are presented with photographs, accompanied by technical information, dimensions, drawings and pictures of the pieces in real settings such as residential, hospitality, retail, restaurants and public areas around the world.



The new website is online!

The firm's new website went online last month, with completely new graphics and content, designed to keep track of Living Divani's constant activities in the fields of design, communication, and culture.

A fresh and user-friendly site, packed with content, yet quick and straightforward to consult, a modern take on the firm's history and its many facets.

Enjoy it!

[Click to view!](#)



FOCUS ON CHAUFFEUSE

Design by Piero Lissoni

A new look for bergère chair Chauffeuse, the “classic armchair” of all our memories, revisited and repropoed by Living Divani in 2011. Spaciously reassuring, and with a wide range of possible uses, Chauffeuse is an armchair equally suitable for home or contract settings.

In the version covered in new Glow linen mix fabric, with a soft feel reminiscent of the fashion world and men's shirts, but with the performance demanded of the upholstery world, it suggests an experience of luxury and intimacy, conviviality and comfort.



Technical details

BERGERE ARMCHAIR

Supporting structure in poplar and fir plywood. Sprung using interwoven coated-rubber webbing. Shell padded with variable-density polyurethane foam. Covering in needle-punched, resinated, polyester fibre, bonded onto a polyamide velveteen backing.

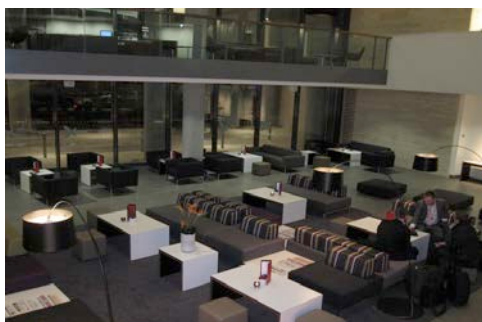
Seat cushion in goose down, with insert in variable-density polyurethane foam. Base in solid oak with natural or charcoal-coloured acrylic varnish. Fabric or leather covering. The covers of the fabric version are fully removable, with zip and velcro fastenings.

Dimensions: 80 x 87 x 94 cm

CONTRACT

DOUBLE TREE BY HILTON HOTEL LONDON (UK)

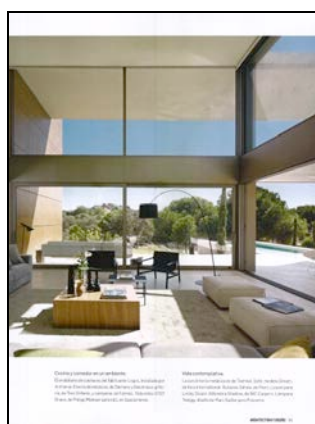
Twin armchairs and Wall and Metro2 sofas bring a refined elegance to the lounge and "sky bar" of this four-star central London hotel with its view over London Bridge and the London Tower.



PRESS REVIEW December 2012



Arquitectura y Diseño (E)



Arquitectura y Diseño (E)



Brava Casa (I)



Case & Stili (I)



Eigen Huis (NL)



Hola Decoracion (E)



Magazine for Living (I)



Magazine for Living (I)



Hearst Home (I)



H.O.M.E. (D)



H.O.M.E. (D)



Interni (I)

Extrasoft sofas on the December covers of Case da Abitare (I) and Elle Decoration (NL)

The great versatility and softness of the ultimate modular sofa Extrasoft takes the cover of the December issues of magazines *Case da Abitare* and *Elle Decoration Holland*!

Two different settings, both highly striking, illustrate the many possibilities for using this sofa, which can elegantly personalize and distinguish both modern or classic home environments and public areas.

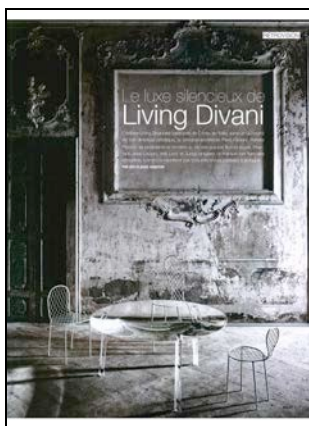


Living Divani retrospective on IDEAT December 2012

Idéat, Living Divani's media partner for France for a number of years, ends 2012 with an interesting retrospective article celebrating a fruitful partnership.

As products exemplifying the Living Divani world, Idéat chooses Extrasoft sofa, Hoop armchair and Family Chair, to illustrate the brand's philosophy and its prestigious partnerships with Piero Lissoni, Arik Levy and Junya Ishigami.

This great honour bestowed upon us by the French publication further reaffirms our success on the French and Belgian markets, where Living Divani has successfully positioned itself among the top design firms, thanks to the refined elegance and poetry of its proposals.



PRESENTAZIONE



Le fauteuil Hoop

d'Arik Levy

Alexandre Levy è un designer israeliano che ha studiato all'Accademia di Belle Arti di Tel Aviv. Ha lavorato per anni in un'azienda di design e ha fondato il suo studio di design nel 1999. Ha collaborato con diverse aziende e ha progettato diverse collezioni di mobili e oggetti. Il suo stile è caratterizzato da linee pulite e forme organiche. Il suo lavoro è stato esposto in diverse gallerie e musei in tutto il mondo. Ha vinto numerosi premi e ha ricevuto diverse commissioni pubbliche. È considerato uno dei più importanti designers israeliani e internazionali.

Il suo lavoro è stato esposto in diverse gallerie e musei in tutto il mondo. Ha vinto numerosi premi e ha ricevuto diverse commissioni pubbliche. È considerato uno dei più importanti designers israeliani e internazionali.

2009



A modern chair with a metal frame and cushions, titled '2009'.

PRESENTAZIONE



La Family chair

de Junya Ishigami

Junya Ishigami è un designer giapponese che ha studiato all'Università di Architettura di Tokyo. Ha lavorato per anni in un'azienda di design e ha fondato il suo studio di design nel 1999. Ha collaborato con diverse aziende e ha progettato diverse collezioni di mobili e oggetti. Il suo stile è caratterizzato da linee pulite e forme organiche. Il suo lavoro è stato esposto in diverse gallerie e musei in tutto il mondo. Ha vinto numerosi premi e ha ricevuto diverse commissioni pubbliche. È considerato uno dei più importanti designers giapponesi e internazionali.

Il suo lavoro è stato esposto in diverse gallerie e musei in tutto il mondo. Ha vinto numerosi premi e ha ricevuto diverse commissioni pubbliche. È considerato uno dei più importanti designers giapponesi e internazionali.

2010



A set of modern chairs with metal frames and mesh backs, titled '2010'.